

2. Express the rule in an equation.

Ex:

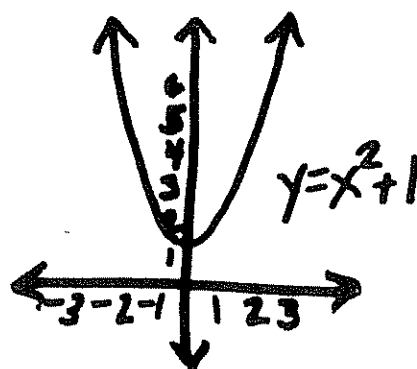
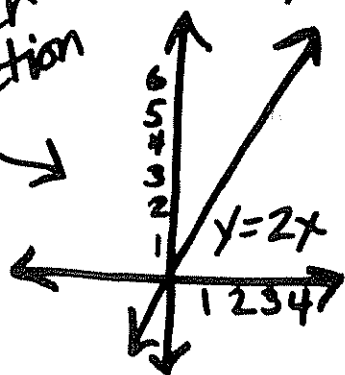
Input (x)	Output (y)
5	3
6	4
7	5
8	6

Every 'y' is  
2 less than  
every 'x'

So...  $y = x - 2$  is the Rule!

III Linear functions: a function whose graph is a straight line. (Not all functions are linear!)

Linear  
function



Non-linear  
function

(This shape is called a parabola.)

- To determine if a function is linear or not, create an input, output table and graph it.